

# TECHNICAL NOTE

Date 30th Sept 15 (rev 2 May 16)

ref 340

Raised by: TC

Distributed to: as required

Soundtracs - Digico(UK) Ltd. unit 10 Silverglade Business Park Chessington Surrey KT9 2QL England  
Tel: +44 1372 845600 Fax: +44 1372 845656 email: support@digiconsoles.com

---

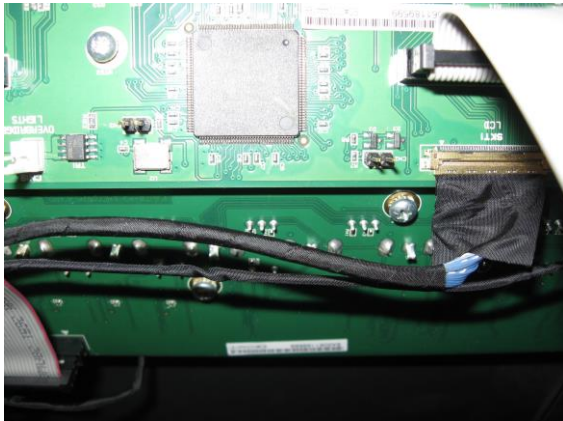
## S21 MIXER

### JUMPER SETTINGS and PROGRAMMING MODES

#### **Jumper positions**

From version 1.0 upwards, jumper settings on P16157 10+1 way fader drive PCB are NOT required.

Refer to the picture



Note mixers have a jumper on CN2 on the right hand section. This is required and affect LED but not motor or control operation if not present.

Note how the 2 PCB's as installed have different external cables connected. Take note of these prior to removal of PCB's. It is important that these are re-fitted as it is the presence or absence of these that determines how the card will boot in "left hand" or "right hand" mode.

#### **Manual setting of automatic reprogramming of a section at boot up**

Pressing mute button channel 1 and channel 10 together and applying power whilst these are pressed will force the section to go to boot loader and replace the firmware with code to match the current version of mixer software.

The above process assumes the code already present is valid and functioning. In the event of failed code the programming mode can be forced by placing a jumper on CN 3 (see picture) and applying power. If the section successfully boots the mixer can be shut down and the jumper removed prior to continuing normal operation.