

# TECHNICAL NOTE

Date 10th Feb 09 (rev Apr 18) rev 5  
ref 206

Raised by: tc

Distributed to: Distributors as required

4 pages

Soundtracs - Digico(UK) Ltd. unit 10 Silverglade Business Park Chessington Surrey KT9 2QL England  
Tel: +44 1372 845600 Fax: +44 1372 845656 email: [support@digiconsoles.com](mailto:support@digiconsoles.com)

---

## Single Screen SD-series Mixers

### **Adjustment of Overview Screen Settings**

**Note: This is intended for technicians and operators familiar with computer setup, especially in Windows OS. If in doubt please contact technical support at your distributor for assistance**

The following is used to readjust if the overview screen settings (SVGA output) in the single screen SD series mixers is showing only the SD "desktop" logo but no mixer components. It does not cover multi-screen systems such as SD5, SD7, SD12, SD-Q7 and later systems.

A correctly adjusted screen will show "OVERVIEW SCREEN" when the console software is active and no channels are allocated to the screen. If this is not seen, the screen output is not correctly setup.

If there is no picture at all showing, this is an indication of a different problem. Refer to technical support.

The SD OS is protected by a program called ReadyOn. Unless ReadyOn is disabled, any changes made to the OS, will be lost when the mixer is switched off.

There are three steps to this update of software settings.

1. Disable ReadyOn 2. Modifying the OS Settings 3. Enable ReadyOn

You must complete all three steps in the correct order.

**Ensure an overview screen is connected to the mixer before applying power and booting the mixer**

## 1. Disabling ReadyOn

From the SD application, Quit to Windows.

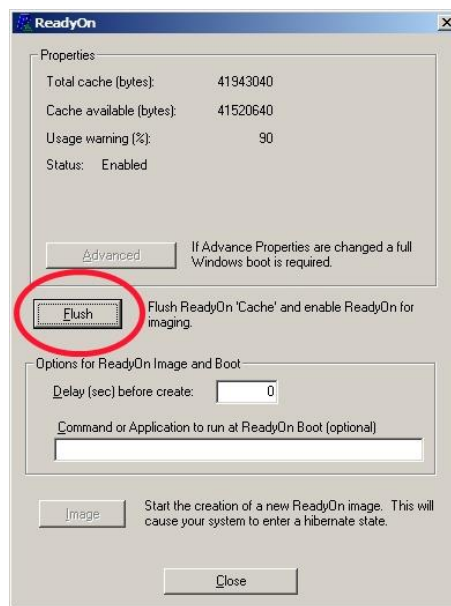
press Alt-F4 whilst in the SD program  
Core 2 mixers have a Quit to Windows button under the System button

Right-Click on the Start Menu button in the windows tool bar, and choose "Explore"

See Windows Explorer open

Navigate to C:\ Program Files \ Ardence \ ReadyOn,  
double click ReadyOn.exe to run this program

The following window will open.



Click on the Flush Button, as indicated above.

The following Progress Bar will appear.



Once the Flush is complete, close ReadyOn.

continued

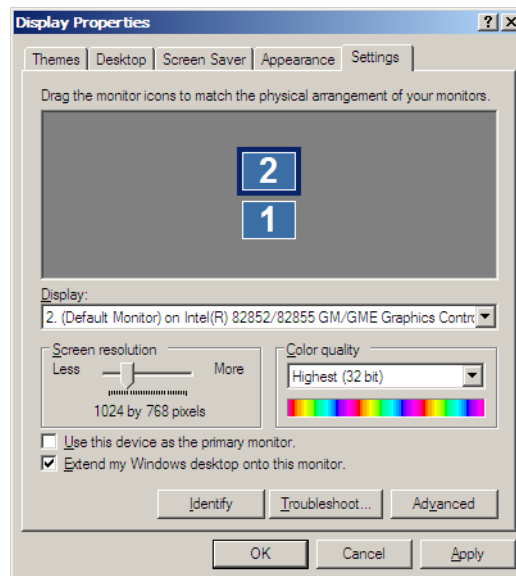
## 2. Adjusting Screen arrangement

Any adjustments to screen arrangement need to be made while ReadyOn is disabled (i.e. before you press the Image button in the last part of the procedure). You will not be able to set up screen arrangement if you do not have a monitor connected and switched on.

To check or adjust arrangement of the screens, right-click on the desktop behind the ReadyOn window; select Properties (the last menu item).

In the window that opens, select the Settings tab. You should then ensure that the two screens are arranged vertically, as shown below. If you need to adjust the positioning, pick up the 2<sup>nd</sup> screen box, and drag into position above screen 1.

Click Apply, the OK to close this Display Properties Window.



If you have had to make any adjustments, you should now return to the ReadyOn window, and proceed with the final part of the update.

continued

### 3. Enabling ReadyOn

Right-Click on the Start Menu, and choose "Explore".

Navigate to C:\Program Files\Ardence\ReadyOn, and then run ReadyOn.exe

**Close the Explorer window that is open behind the ReadyOn window**, so that the only window open on the screen is the ReadyOn window as shown below.

Press the Flush Button.

In the "Command or Application to run at ReadyOn Boot" box, type the following path.

For SD8 **D:\SD8\SD8.exe**

For SD9 **D:\SD9\SD9.exe**

For SD10 **D:\SD10\SD10.exe**

For SD11 **D:\SD11\SD11.exe**

Use the same syntax for other SD-series mixers



Press the Image Button. The screen should show the System Hibernating.

**NOTE:** If there is an error message at this point, click OK in the error window, close the Ready On program and restart the console using the Windows Start button menu.

The console will restart and then halt at the Windows desktop.

Now repeat the above procedure from STEP 3 onwards.

Once complete, turn power the console off.

You can now turn Power to the Console back on, and proceed as normal.