

TECHNICAL NOTE

Date: April 2024

Ref: TN594

Raised by: RW

Distributed to : As Required



Digico (UK) Ltd. The Distillery Unit 5 Silverglade Business Park, Chessington, Surrey, KT9 2QL, England
Tel: +44 1372 845600 support@digiconsoles.com www.digico.biz

Upgrading SD10 to V1742

These instructions will guide you through updating your SD10 Console from V1619 to the latest release. If you are upgrading from a version earlier than V443, please contact DiGiCo Support before attempting this upgrade. You can update directly from V443+ to V1742.

V1742 replaces V1619 as the latest release.

If you are upgrading from a version of software earlier than V821, SD10 Stealth Core 2 software is a Chargeable Upgrade.

Your console will start for 10 times without an activation code after which one must be entered.

To purchase an activation code (password), please go to www.digico.biz

If you are upgrading from V821 or above and have already activated Core 2, this activation will remain in place.

Please note that in the unlikely event that any of the serial devices fail to update correctly, you may be required to reprogram them using an ICD2 programmer. Please consult your local DiGiCo distributor for more information.

The required Firmware upgrades are shown in the table below.

Allow yourself plenty of time to perform these upgrades.

The following table lists the versions and codes you will end up with after performing this update

Description	Version 1619	Version 1742
Software	16.0.1619	17.0.1742
Worksurfaces	119	122
Local I/O	55	55
GPIO macro	9	9
Engine : HOST	05/07/2021	05/07/2021
Engine : FPGA	06/11/2012	06/11/2012
Engine : Effects	18/04/2012	18/04/2012
SD-Rack: Rack8b.bin	21/09/2016	21/09/2016
SD-Rack : Rack8b.bit	05/07/2012	05/07/2012
D-Rack : DRack8b.bin	10/12/2014	10/12/2014
D-Rack : DRack.bit	13/03/2014	28/08/2023
D2-Rack: D2rack.bin	03/11/2017	03/11/2017
D2-Rack:D2rack.bit	01/04/2014	28/08/2023
DiGiRack/MADIRack: Rack.bin	28/09/15	28/09/15
DiGiRack/MADIRack: Rack.bit	10/03/06	10/03/06
Optocore V221 Firmware	V5R3	V5R3

**Disconnect All Optocore, MADi, Local I/O Audio and
Headphone Connections before proceeding with this upgrade.
Quit to Windows (system > quit to windows)**

1. Copy the Software Updater **SD10_V1742z_Updater.exe** onto a suitable USB Key and insert into a free USB Socket on the SD10.

2. Right-Click on the **Start Menu** and choose **Explore**.

Navigate to your USB Key and run **SD10_V1742z_Updater.exe** from your USB Key. This updater will install the required updates, application software, and backup your current SD10 application folder.

3. The **UpdateHardware** application will now automatically run.

For each device, you will see the current running version in the “running” column, with the new version in the “available” column. The available version is based on the corresponding file in D:\SD10 directory.

Perform each required update and wait for the green tick to disappear indicating that each update has finished before continuing with the next one:

Now proceed with the console firmware updates in the following order:-

None required

If you are updating from a version previous to V1619, there may be additional Console firmware updates to perform.

Once complete, close the **UpdateHardware** Program and remove your USB Key from the Console.

4. From the Start Menu, shut down the console and power off.
5. Power the console on. The console will launch straight into the SD10 application.

You should check that all the components have updated correctly in the Diagnostics Panel.

Open this from the System Menu / Diagnostics.

The First Tab (Console) will show the version for the serial devices you have updated.

The right-hand section of this window lists the Serial devices, and in the code column, you can see the version running. These should match the new release versions listed at the start of this document. If they do not, it is likely that the upgrades have failed, and you should repeat the upgrade process (from Point 3) using

D:\SD10\UpdateHardware.exe.

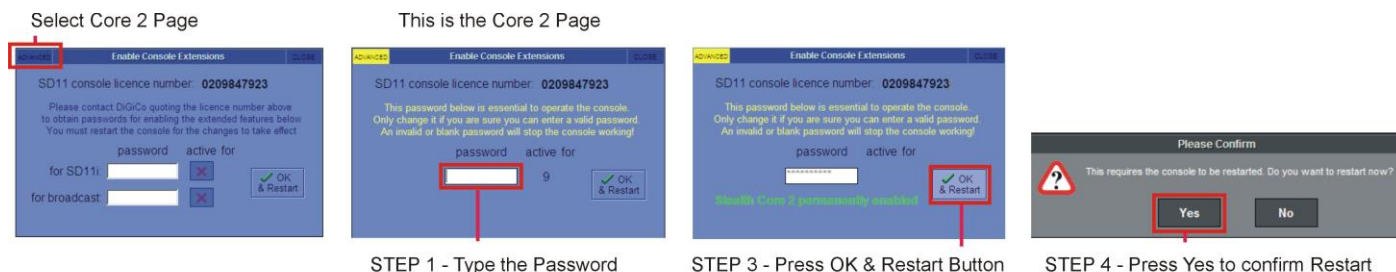
The second Tab (Engine) will show the Engine Codes you have updated. Confirm that the Host, Effects & FPGA Code Downloaded Dates match the date listed on the first page of this document.

6. If you are upgrading from V760 or previous (not required if upgrading from V822) - Go to *System>Enable Extensions* and touch in the top left corner on **Core 2 to obtain your security code so you can purchase and activate your Stealth Core 2 Licence.**

Stealth Core 2 Upgrade – IMPORTANT NOTES about activating your Core 2 upgrade

If you are upgrading from V822 and have already activated Core 2, these steps are not necessary as the Core 2 activation will already be in place and will remain so.

If you are upgrading from V760 or earlier, when you have the generated the password, go to the console Master Screen > System > Enable Extensions and do the following:



OR

If 10 free tries have already expired you will see this panel on application start



In this case - **Type the Password** and press the on screen **OK** button and the application will load as Core 2
To exit the application without entering a password press the keyboard **ESC** key

If, after following all the instructions, you cannot upgrade your SD10, please contact DiGiCo Technical Support.